

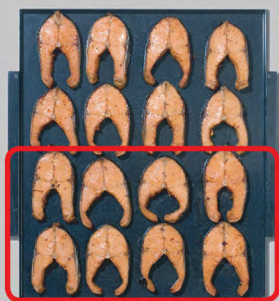
Unique Features of the FlexFusion Combi Platinum

HENNY PENNY
Engineered to Last

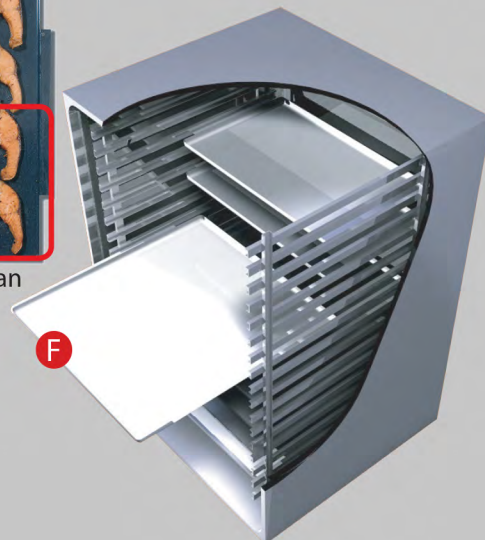
The Henny Penny FlexFusion Platinum Combi oven offers the maximum cooking flexibility with the highest efficiency in the most limited kitchen spaces. With the intuitive, touchscreen controls, revolutionary FlexiRack design and other great features, you are guaranteed to keep up with the daily hustle while cooking consistent and quality products every time.

Features

- A** **DYNASTEAM2:** Delivers precise boilerless steam generation as needed and resists lime buildup of components.
- B** **HEAT EXCHANGER:** Saves energy by preheating incoming water with hot discharge water as it exits the cooking chamber.
- C** **AUTO-REVERSIBLE FAN:** Enables consistent cooking over a wide variety of items in combination with superb chamber temperature control.
- D** **USB PORT:** Enables upload of custom recipes, product images, new software or videos.
- E** **BARCODE SCANNER:** Saves time in loading recipes with one easy scan.
- F** **FLEXIRACK:** Doubles your productivity without a larger footprint.



Standard Combi Pan



Helpful Apps



Creates repeatable step-by-step cooking instructions; saves time with auto-mated cooking functions; and trains realtime with preloaded videos.



Eliminates exposure and time with hands free, premeasured 2-in-1 cartridge cleaning system.



Tracks water and energy usage after each recipe cook.



Tests all functions and diagnoses problems with the touch of a button before you call a technician.



Removes guess work during the cook cycles with its info-step prompts.



FLEXFUSION™

Platinum
Gold

SpaceSaver
SpaceSaver Plus

Model	Power	Dimensions: IN (MM)		Pan Capacity					Chicken Capacity
		Width	Depth	2/1 GN	Flexi	Sheet	1/1 GN	2/3 GN	
FPE-615	10.9 kW	39.25 (997)	31.50 (799)		6		6		24
FPE-115	16.5 kW								
FPE-215	32.7 kW	42.38 (1076)	32.00 (813)		20		20		72
FPG-615	37,500 BTU/hr	40.13 (1019)	31.50 (799)		6		6		24
FPG-115	61,500 BTU/hr								
FPG-215	123,000 BTU/hr	42.38 (1076)	32.00 (813)		20		20		72
FGE-615	10.9 kW	39.25 (997)	31.50 (799)		6		6		24
FGE-115	16.5 kW								
FGG-615	37,500 BTU/hr	40.13 (1019)	31.50 (799)		6		6		24
FGG-115	61,500 BTU/hr								
FPE-621	21.4 kW	39.25 (997)	31.50 (799)	6		6	12		24
FPE-121	31.2 kW								
FPE-221	62.0 kW	42.38 (1076)	32.00 (813)	20		20	40		72
FPG-621	58,000 BTU/hr	40.13 (1019)	31.50 (799)	6		6	12		24
FPG-121	89,000 BTU/hr								
FPG-221	178,000 BTU/hr	42.38 (1076)	32.00 (813)	20		20	40		72
FSE-605	3.6 or 5.5 kW	21.63 (550)	24.75 (629)					5	4
FSE-610	7.8 kW	21.63 (550)	32.13 (816)			6 (half)	5		6



200 size - 20 pans



100 size - 10 pans



600 size - 6 pans



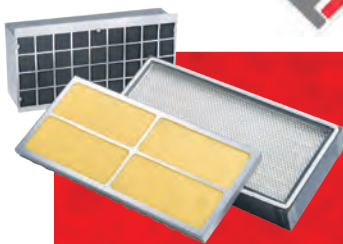
SpaceSaver - 5/6 pans



FSH-605

FSH-610

The Henny Penny integrated hood option for SpaceSaver and SpaceSaver Plus combis offers a lowcost venting solution that gives operators the flexibility to position combi cooking anywhere there is not a dedicated ventilation system.



Cleanable smoke and grease filters

