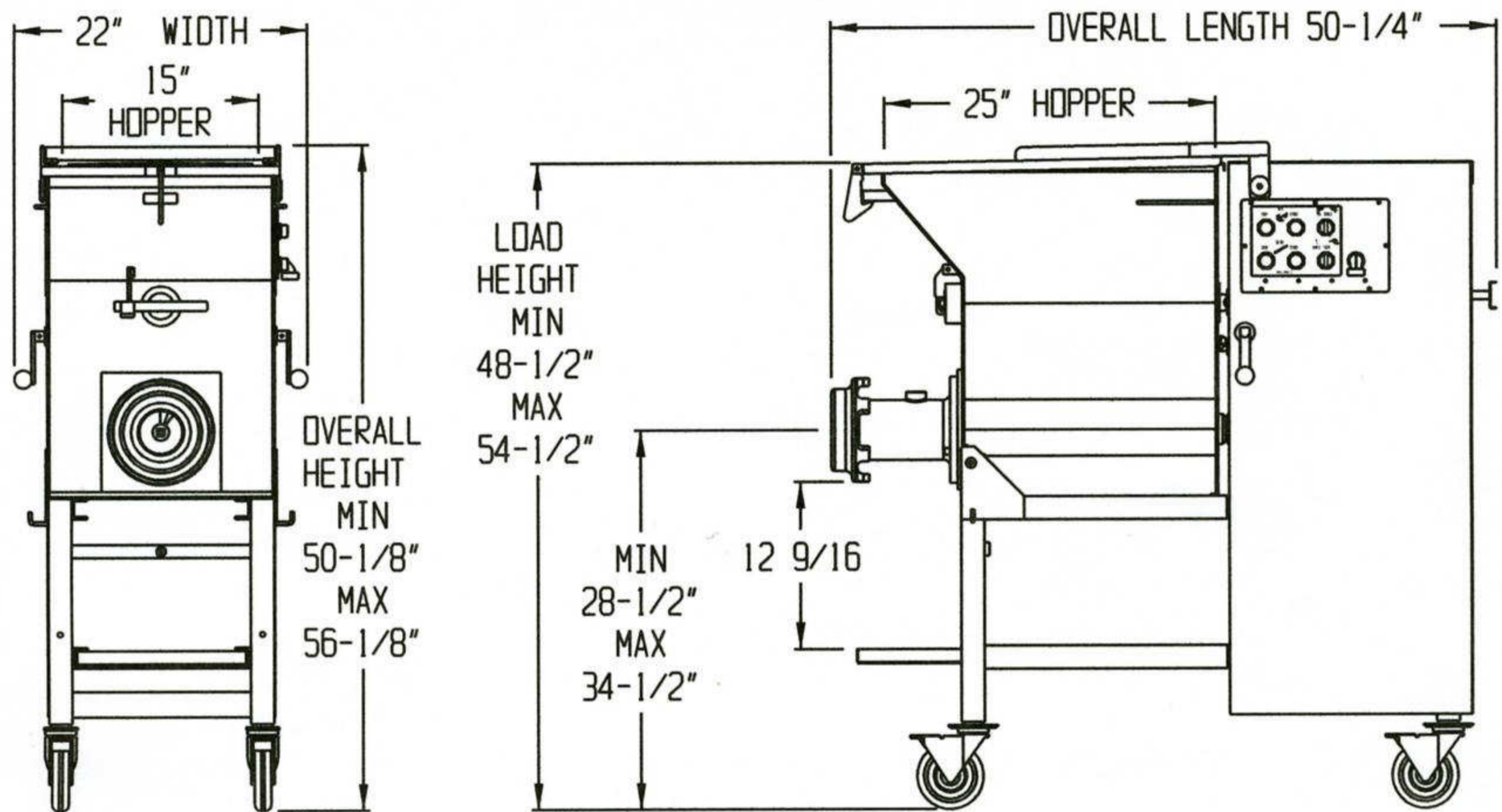


DANIELS FOOD EQUIPMENT

AFMG 532 MIXER GRINDER



SPECIFICATIONS

STANDARD MOTOR:

GRINDER; 230 VOLT, 13.2 AMP, 1725 RPM, 60 Hz, 5 HP, 3 PH.
MIXER; 230 VOLT, 3.0 AMP, 1725 RPM, 60 Hz, 3/4 HP, 3 PH.

OPTIONAL MOTOR:

GRINDER; 208/460 VOLT, 15/6.6 AMP, 1725 RPM, 60 Hz, 3 PH.
MIXER; 208/460 VOLT, 3.6/1.5 AMP, 1725 RPM, 60 Hz, 3 PH.
GRINDER; 230/460 VOLT, 23/11.5 AMP, 1725 RPM, 60 Hz, 5 HP, 1 PH.
MIXER; 230/460 VOLT, 5.4/2.7 AMP, 1725 RPM, 60 Hz, 3/4 HP, 1 PH.

CONSTRUCTION:

ALL STAINLESS STEEL CONSTRUCTION,
100 LBS. CAPACITY, REMOVABLE PADDLE, STAINLESS STEEL
HOPPER COVER, ADJUSTABLE SHELF.

CONTROLS:

MIX ON/OFF - BOTH DIRECTIONS, GRIND ON/OFF,
HAND OR FOOT CONTROL

WEIGHT:

605 LBS. SHIPPING INFO: 655 LBS. SIZE: 36" X 60" X 48" HIGH

DANIELS FOOD EQUIPMENT

310 NORTH CLAYBORN AVE P.O. BOX 341, PARKERS PRAIRIE, MN. 56361

PHONE: (218) 338-5000 FAX (218) 338-5909.

WEB: www.danielsfood.com E-MAIL: danielsfood@midwestinfo.net