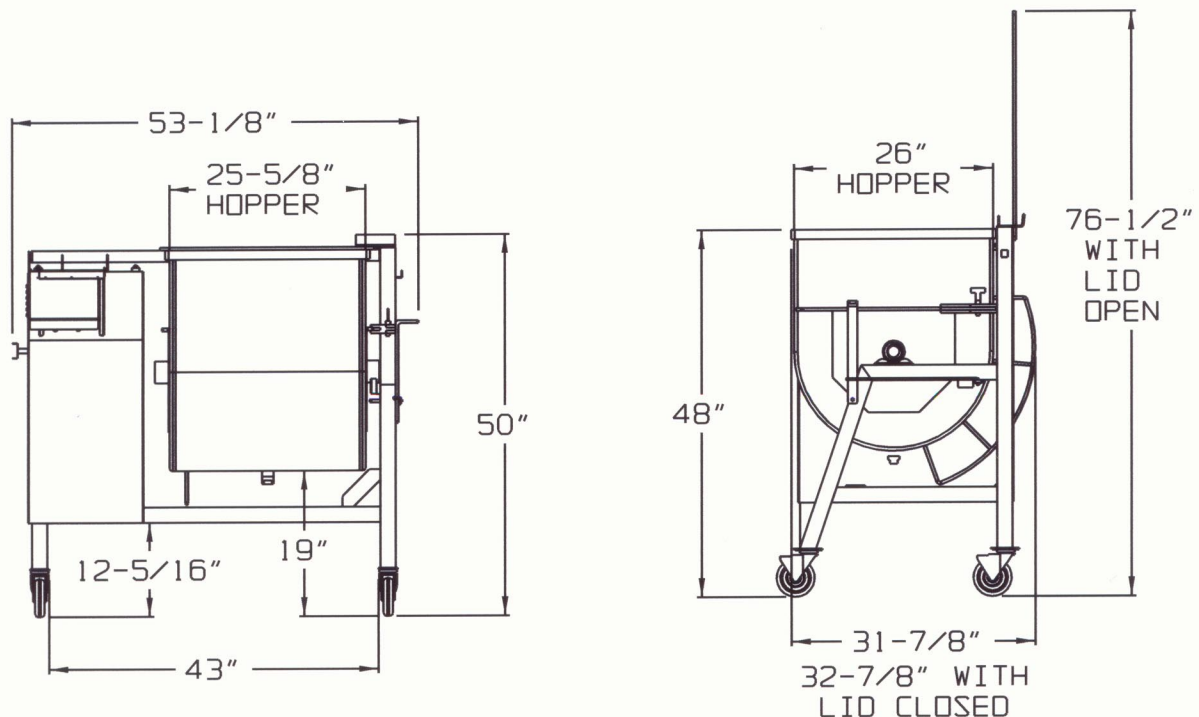


DANIELS FOOD EQUIPMENT

DMX and DMX QUAD 300 MIXER



SPECIFICATIONS

MOTOR:	STANDARD: 3 HP, 3 PH, 230 VOLT, 60 Hz, 8.8 AMP OPTIONAL: 3 HP, 3 PH, 460 VOLT, 60 Hz, 4.4 AMP
PADDLE RPM:	DMX: 24-1/3 RPM DMX QUAD: INNER 24-1/3 RPM, OUTER 24-1/3 RPM
TIMER:	LED READOUT – HOURS and MINUTES
DIRECTION CONTROL:	FORWARD-STOP-REVERSE
HOPPER CAPACITY:	300-LBS
HOPPER CONSTRUCTION:	12 GA STAINLESS STEEL, 110° DUMPING, REMOVABLE PADDLE, CLEANOUT DRAIN ON BOTTOM, TRANSPARENT COVER WITH SAFETY LOCKOUT.
FRAME:	11 GA STAINLESS STEEL TUBING, OPEN UNDER HOPPER FOR EASY DUMPING, LOCKING SWIVEL CASTERS.
DUMP HEIGHT:	12-7/8"
WEIGHT:	DMX: 585-LBS, SHIPPING INFO: 660-LBS, SIZE: 36" X 60" X 53" HIGH DMX QUAD: 610-LBS, SHIPPING INFO: 685-LBS, SIZE: 36" X 60" X 53" HIGH

P.E.N., Inc dba

DANIELS FOOD EQUIPMENT

310 NORTH CLAYBORN AVE. PARKERS PRAIRIE, MN. 56361 PHONE: (218) 338-5000 FAX (218) 338-5909

WEB: www.danielsfood.com

E-MAIL: danielsfood@midwestinfo.net

7/4/2002